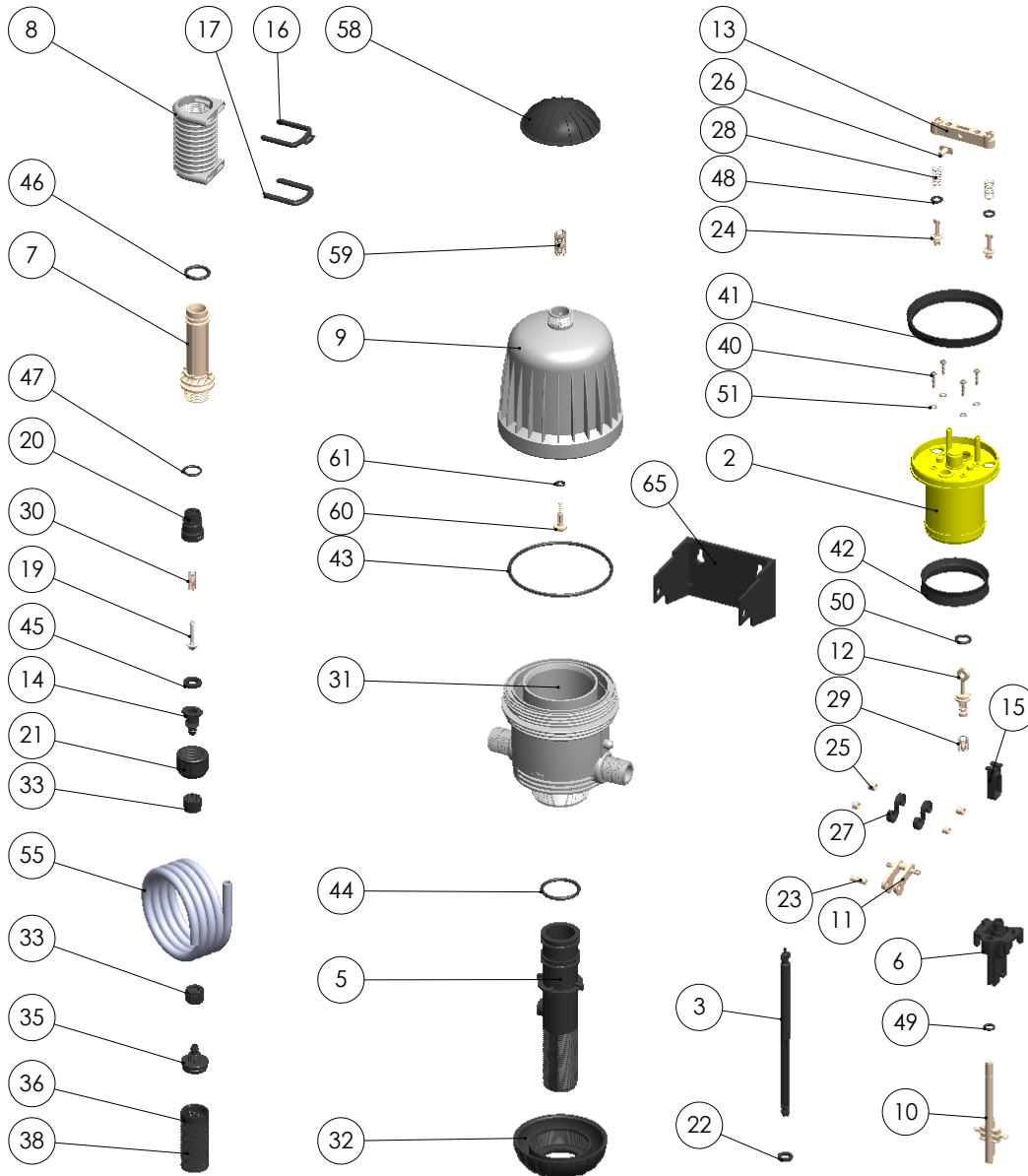


MixRite 2.5 0.1-0.9%

28020100000

01.07.2016



No.	Part	Cat.No
2	PISTON 100/70 DUAL SEAL	36016003102
3	PISTON & BAR 1%	36016111103
5	CYLINDER SUPPORT 1%	36013011205
6	BASE	36030162206
7	PROPORTIONING CYLINDER 1%	36016126107
8	PROPORTIONER	36030180708
9	COVER	36030157309
10	EJECTOR PIN	36030167110
11	TOGGLE	36030167211
12	VALVE 1	36030147712
13	VALVE BRIDGE	36030147513
14	8 MM BARB CONNECTOR FOR CHECK VALVE	36015083239
15	TOGGLE FRAME	36030149915
16	LATCH	36030167916
17	LOCK LATCH	36030168017
19	PISTON FOR NEW CHECK VALVE PVDF	36043019219
20	SPIDER FOR CHECK VALVE	36013013220
21	3/4" NUT FOR NEW CHECK VALVE	36012013221
22	SUCTION SEAL 1% IL	36000030122
23	AXLE	36030162523
24	VALVE 2	36030153124
25	EJECTOR SLIDE	36030167125
26	PIN	36030167026
27	PLASTIC SPRING MIXRITE 2.5/3.5	36001018227
28	SPRING 2	38060797428
29	SPRING 3	38060797429
30	CHECK VALVE SPRING	38060797430
31	BODY DRILL 11.5 MM	36020011331
32	NUT 1 3/4"	36030161532
33	NUT -8 MM BLACK	32046148002
35	BARB COVER 8 TO SUCTION FILTER 30	36030010835
36	SUCTION FILTER 30	36030013036
38	FILTER WEIGHT	38060801038
40	STAINLESS STEEL SCREW	38060351640
41	UPPER PISTON SEAL 101 MIX.3.5	36330172241
42	LOWER PISTON DUAL SEAL	36089002242
43	O RING 2-243	38060224343
44	O RING 2-220	38060222044
45	FLAT SEAL FOR NON RETURN VALVE EPDM	38000023248
46	O RING 2-313	38023132246
47	O RING 2-114	38060211447
48	O RING 2-108	38060210848
49	O RING 2-109	38060210949
50	O RING 10X3	38060101650
51	STAINLESS STEEL DISC	38060351641
55	SUCTION TUBE 8mm	36030000055
58	AIR RELEASE	36030161658
59	SPRING 5	38060000059
60	AIR RELEASE SCREW	36030284360
61	O RING 2-107	38060210761
65	MOUNTING BRACKET	36030162765